

Customer :

customer

Customer part :

customer part

Comment :

Comment

S1=8.28

S2=8.87

Tmax=453

Tp S2=492.0

PI=0.48

HI=119

Sample =1778.80

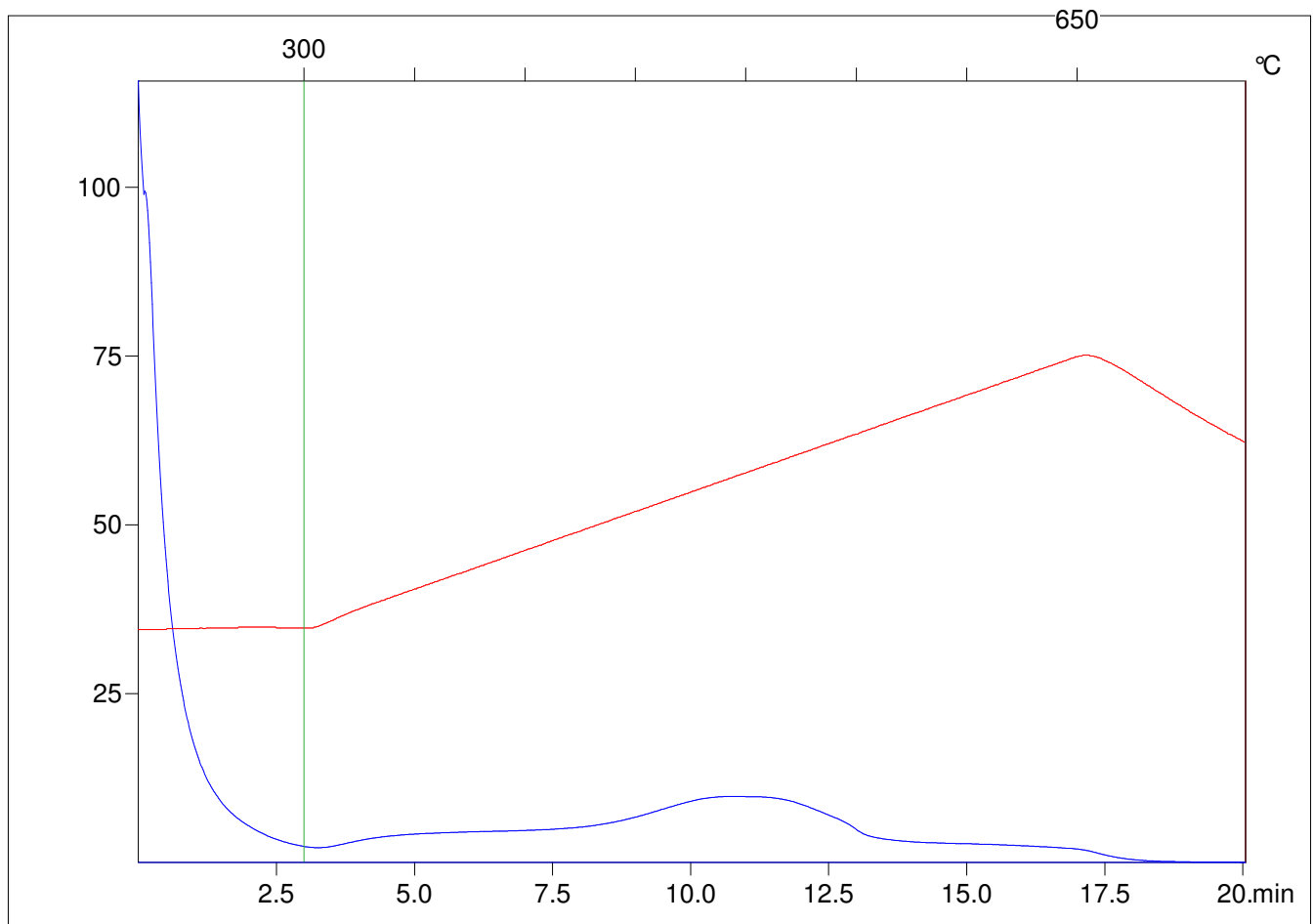
Method =Bulk Rock

Cycle=Basic

KFID(10\*9)=1444

Qty =70.7

TOC=7.45



C:\VINC\PK3\_1792\PK063.R00 : FID pyrolysis graphic

State Ok

Pyro Status Negative value

Oxi Status Negative value